



**FHIN CONVERSIONS**

**RACEVAN  
CONVERSIONS  
BROCHURE**





# ***ABOUT US***

## **Built on Passion. Driven by Adventure.**

Founded in 2019 by Ivor and Frankie, Fhin Conversions was born from a love of travel and craftsmanship. What began as a personal passion for building Racevans has since evolved into a trusted name in the van conversion industry.

## **Craftsmanship You Can Trust**

At Fhin, we pride ourselves on delivering exceptional service and top-quality builds. We use only premium materials and components, ensuring that every Racevan or motorhome we create is reliable, stylish, and built to last.

When you choose us, you're not just getting a van - you're getting a completely custom home on wheels, tailored to your exact needs and lifestyle.

## **From Dream to Drive**

We specialise in:

- \* Sourcing the ideal base vehicle to match your chosen specifications
- \* Designing and crafting the interior to reflect your personality, preferences, and travel goals
- \* Whether you're looking for minimalist efficiency or luxury comfort, we'll work with you every step of the way to bring your vision to life.

## **Join the Fhin Family**

Over the past few years, our business has grown thanks to a loyal community of adventurers who trust us to be part of their journey. We love seeing where life takes you after we hand over the keys. Follow us on Facebook, Instagram, and TikTok. Don't forget to tag us @FHIN\_Conversions - we'd love to see your travels!

## **Ivor, Frankie and the Team**



# BESPOKE RACEVAN CONVERSIONS

*Fully Inclusive aspects of our conversions:-*

## Rear garage

- \* Vinyl floor coved up walls to seal trim
- \* Walls finished in white plastic and 5-bar aluminium plates
- \* Tie down rails on floor and side wall
- \* Led lighting
- \* 12v socket
- \* Rear working night light

## Shower cubical.

- \* Shower tray
- \* Toilet
- \* Shower unit
- \* Walls clad in waterproof plastic

## Kitchen unit

- \* Sink & tap
- \* Pull out drawers
- \* External BBQ point
- \* 80L fridge
- \* Thetford cooker & 3 ring hob

## Services

- \* Underslung fresh water tank
- \* Electrical install
- \* Utilities supply
- \* Water supply
- \* Waste supply
- \* Truma 4e heater
- \* Led lighting around top & bottom
- \* Main lighting
- \* USB sockets
- \* 12v cigar socket
- \* 240v socket

## Windows / skylight

- \* Bonded opening windows , blind included
- \* Large skylight above living area and bed area.

## Seating

- \* Choice of a forward facing double travelling seat frame forming a small bed or bench sofa seat pulling to sliding door
- \* Front seating in leather and centres to customers choice
- \* Rear seating trimmed to match fronts
- \* Mattress covered with removable cover

## Walls & ceiling

- \* Fully insulated
- \* Ply lined
- \* Suede liner to walls & ceiling (Other options available)

## Furniture

- \* furniture all finished in light weight ply with ABS edging
- \* Worktop in solid oak or Quartz/ granite
- \* Drop down table on kitchen
- \* Table on seating area

## External

- \* FC sticker kit included

Starting From  
**£23,500**  
PLUS VAT

# GUIDE TO YOUR RACEVAN

**Your Dream Racevan, Made Easy** , Creating your perfect Racevan is simple with our step-by-step guide. We work closely with you every step of the way to make sure your van is built just how you imagined - inside and out.

## Step 1: Choose Your Style

Start by selecting from our wide range of colours and finishes:

- Carpet lining
- Flooring
- Kitchen unit and worktop
- Upholstery and stitching

Every detail can be tailored to reflect your personal style.

## Step 2: Add Styling Packages & Extras

From sleek exteriors to functional upgrades, explore our styling packages and optional extras to really make it your own.

## Step 3: Let Us Do the Rest

Once you've made your choices, our expert team gets to work - bringing your vision to life with craftsmanship and care.

## LET US SOURCE YOUR PERFECT VEHICLE!

We take the hassle out of vehicle sourcing. Whether you're after a specific make or model, we can track down the ideal van to suit your needs - and your budget.

All makes and models available  
Tailored to your budget  
Flexible finance options available

Let us handle the search, so you can focus on designing your dream Racevan.



VOLKSWAGEN VAUXHALL



RENAULT



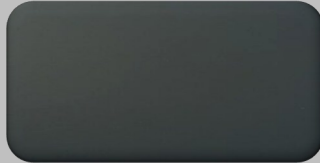


# **COLOURS AND INTERIOR DESIGN**

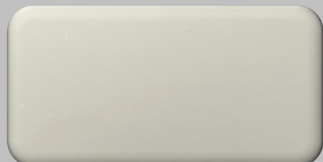
## **KITCHEN UNITS**



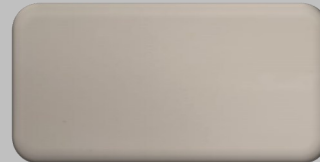
**Italian Green Matt**



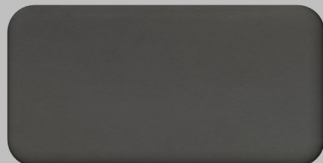
**Indigo Matt**



**Light Grey Gloss**



**Cashmere Gloss**



**Dark Grey Gloss**



**Graphite Pine**



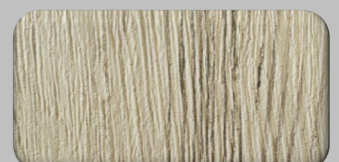
**White Sparkle Gloss**



**Black Sparkle Gloss**



**Marble Gloss**



**Cascina Pine**



**Solid Oak**



**Laminated Oak**

## **WALL COVERINGS**



**Anthracite**



**Smoke**



**Silver**



**Grey**



**Navy**

## **SEAT COVERINGS**



**Cream**



**Tan**



**Grey**



**Black**

## **FLOOR COVERINGS**



**Arctic Oak**



**Shadow Oak**



**Loft Oak**



**English Oak**

**All these Colour options are included in the price, however a variety of colours are available at an additional cost.**

**Fhin Conversions Ltd**  
**Email: [info@fhinconversion.com](mailto:info@fhinconversion.com)**  
**Tel: 07932 419306**  
**07989 324428**

**Unit 26**  
**City Way Industrial**  
**Square Street**  
**Bradford**  
**BD4 7NU**



**CAMPERVAN**  
**CONVERSIONS**  
**ALSO**  
**AVAILABLE**

**REQUEST A**  
**BROCHURE**

